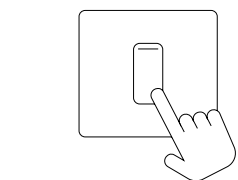
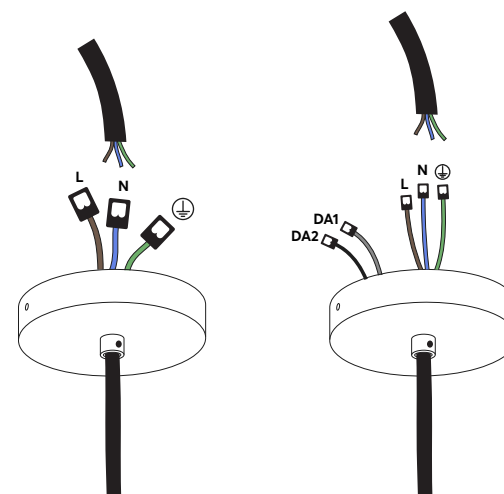
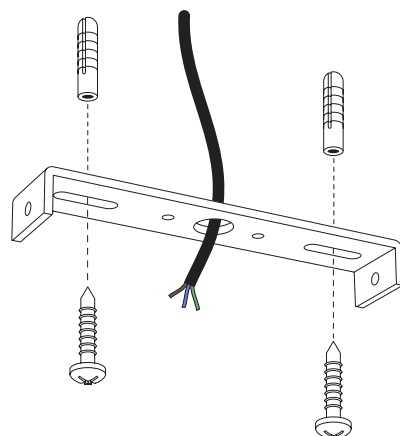


# You Will Need

(not included)



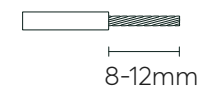
Turn the power off before starting!



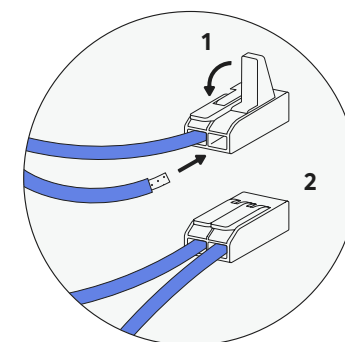
Trailing Edge

DALI

Strip the cable



[www.wago.nl](http://www.wago.nl)  
(for more info)



1

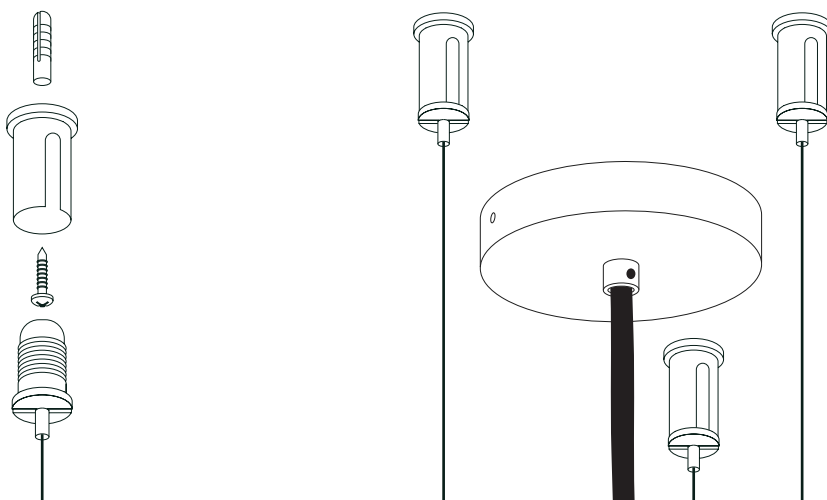
Before starting, please read the guidance on the back of this leaflet.

2

Drill holes and insert wall plugs. Line up the bracket, thread cable through and screw in place.

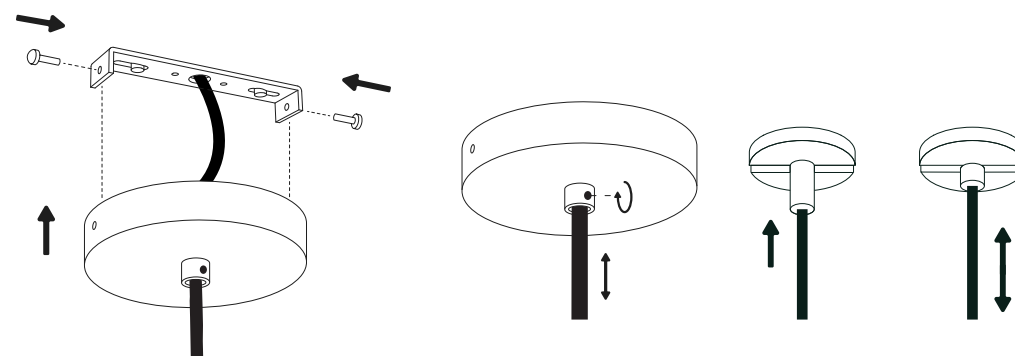
4

The above diagram shows two dimming options (DALI and Trailing Edge). Strip 8-12mm of the cable, exposing the wires. Insert the electrical cable into the wago connector and flip closed.



3

Screw the tensioners into the ceiling before adjusting the length, as shown in the above diagram.



5

Connect the ceiling canopy to the bracket using 2 screws.

6

Fine adjust the cable using the side screw. Adjust the tensioners as shown above. **Your light is now ready to use!**

**Thank you for your purchase!**

**Please read this manual carefully to ensure a safe and correct install of your light.**

- The manufacturer is not responsible for damage caused by incorrect installation.
- Always turn the power off before installation, carry out maintenance or repairs.
- If in doubt, contact a qualified electrician.
- Keep light away from liquid or flammable objects.
- When installing, make sure cables are not crushed, damaged or corroded.
- If a cable is damaged, it must be replaced by a trained professional.
- This product contains an integrated LED lightsource, which can only be replaced within its 2 year warranty.



Assembled inside box

Material: PET Felt

Ceiling Rose: Black Metal

Weight: 9.5KG

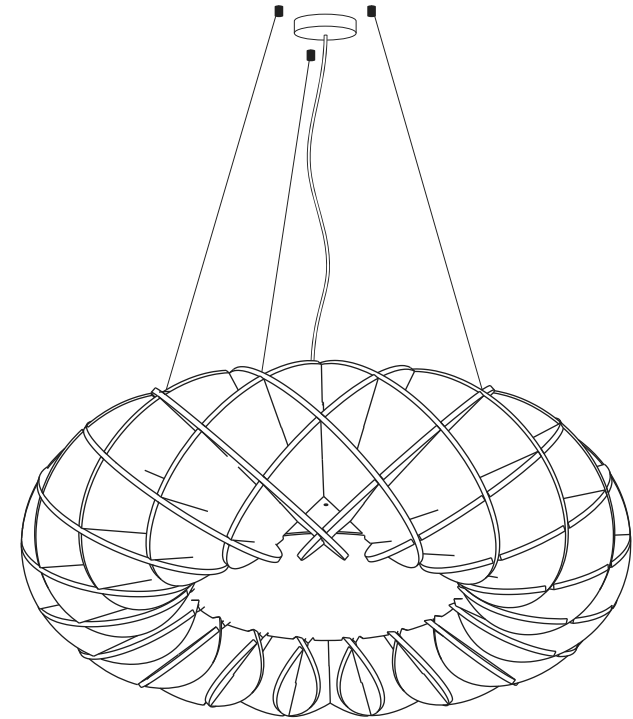
IP20

CCT: 2700/3000/4000/Tunable White

Dimming: DALI/Trailing Edge

# lumēnear

## Acoustic Lighting



# Halo 1000

---

## Installation Guide